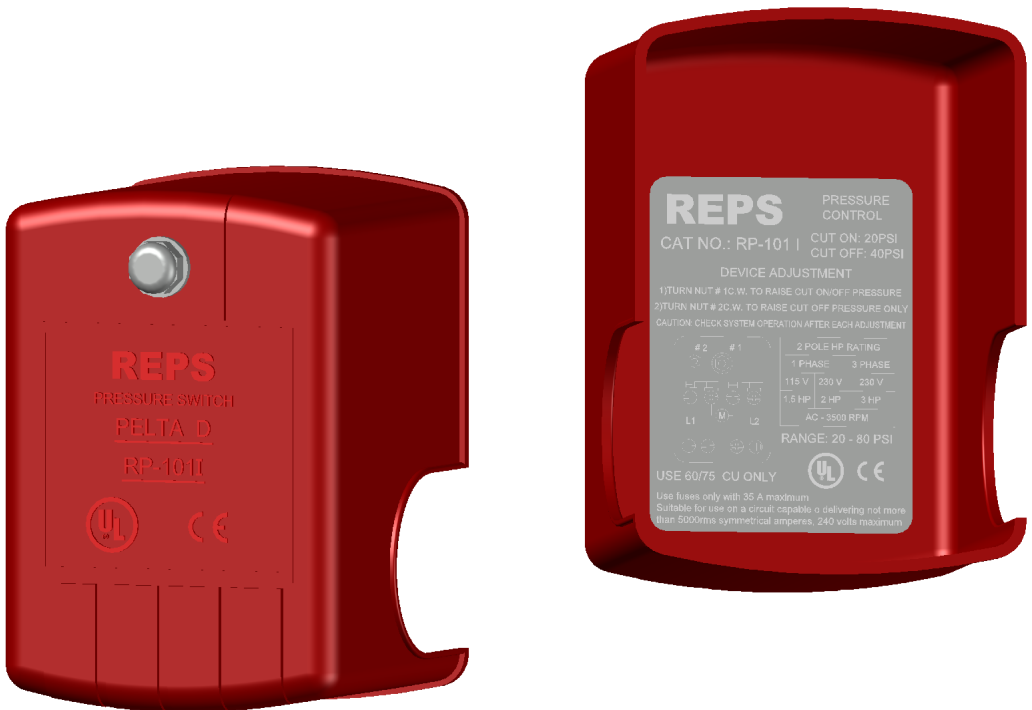




Quality / Technology / Service / Value

PRESSURE SWITCH FOR WATER SYSTEM APPLICATIONS RP-101I



Product datasheet Characteristics



Applications

Pressure switches for use with water in autoclave systems: firefighting systems, water pumps...
The switch ensures automatically the starting and stopping of the electric pump according to the pressure values.

Main

Product name	PELTA D
Product model	RP-101I (In 3 Types)
Maximum pressure range	87 psi (6 bar)
Setting range	20...80 psi. (1.4...5.50 bar)
Electrical circuit type	Power circuit
Product Specific Application	Control electrically driven water pumps
Quantity per Set	1
Type of Packing	Individual

Complementary

Pressure sensor type	Electromechanical pressure switch
Controlled fluid	Fresh water -22...200 °F (-30...93 °C)
Adjustable range on rising pressure	20...80 psi. (1.4...5.50 bar)
Approximate adjustable differential	20...40 psi. (1.4...2.80 bar)
Approximate adjustable differential	30...50 psi. (2.10...3.50 bar)
Approximate adjustable differential	40...60 psi. (2.80...4.20 bar)
Destruction pressure	15 Bar (221 Psi)
Pressure actuator	Diaphragm between 2 thresholds
Pressure switch type of operation	Regulation
Scale type	Adjustable differential <input type="checkbox"/>
Setting	Internal
Local display	Without
Contacts type and composition	Normally closed and made of copper with Ag-Ni surfacing
Cable entry number	2 x 22.35 mm (0.88 in) cable entries with 0.84 in across flats UL 508
Electrical connection	Screw-clamp terminals 10 AWG Screw-clamp terminals 5.261 mm ²
Fluid connection type	1/4 in NPT internal (female) thread
Short-circuit protection	20 A cartridge fuse
Materials in contact with fluid	Zinc plated steel or equivalent flange Nitrile (Buna-N) or equivalent rubber diaphragm



Material	Polypropylene Cover Noryl thermoplastic resin or equivalent Cover
Operating position	Any position
Motor power kW	(1.5 KW 2 hp) 230 V AC, 1 phase (1.1 KW 1.5 hp) 115 V AC, 1 phase (1.5 KW 2 hp) 115 V AC, 3 phase (2.2 KW 3 hp) 230 V AC, 3 phase (2.2 KW 1 hp) 460 V AC, 3 phase (0.75 KW 1 hp) 575 V AC, 3 phase
Electrical durability	100000 Cycles 10 cyc/mn
Mechanical durability	300000 Cycles
Terminal block type	4 terminals
Maximum operating rate	10 Cyc/Mn
Net Weight	0.45 kg (1 Lb)
Repeat accuracy	+/-3 %
Terminals description ISO n°1	L2-T2 L1-T1
Maximum Width	2.78 In (70.61 mm)
Maximum Height	2.80 In (71.12 mm)
Maximum Depth	3.76 In (95.50 mm)
Factory modification	-

Environment

Standards	UL and CE
Ambient Air Temperature for Operation	-22...200 °F (-30...93 °C)
Ambient Air Temperature for Storage	-22...200 °F (-30...93 °C)
Protective treatment	None

Ordering and shipping details

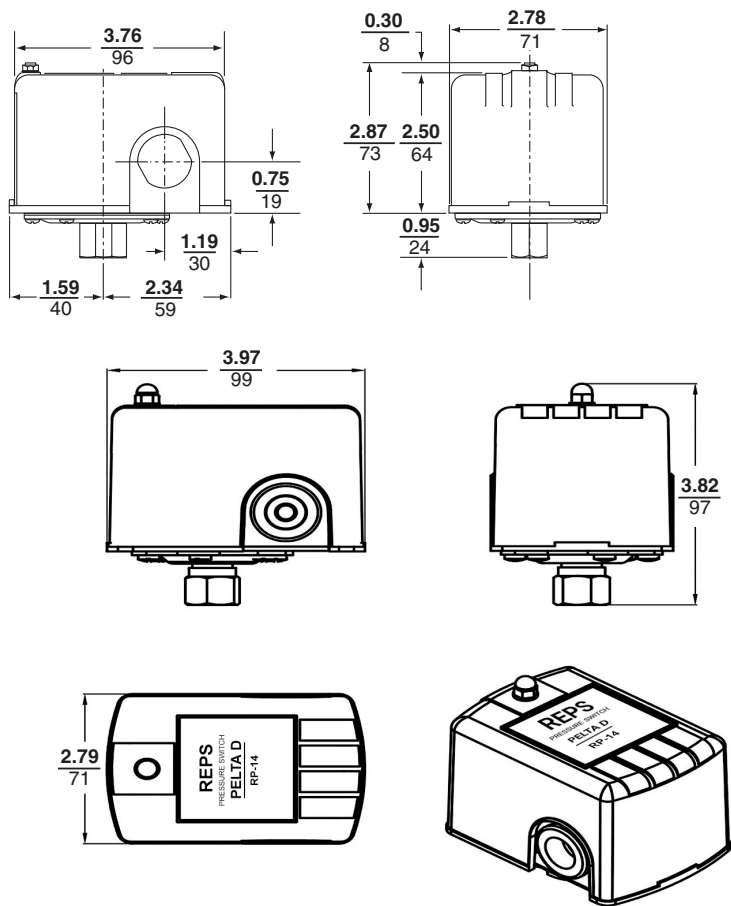
Category	PELTA D RP-101I (INDIVIDUAL) In 3 Types
No. of units in pkg.	1 Pcs.
Package weight	1lb (0.45 Kg)
Box quantity	48 Pcs.
Box weight	47lb (21.36 Kg)
Returnability	Yes

Packing Units

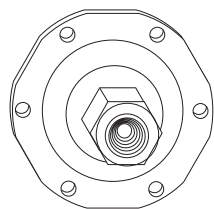
Unit Type of Package 1	PCE
Package 1 Height	195 mm (7.68 in)
Package 1 width	94 mm (3.71 in)
Package 1 Length	126mm (4.96 in)



Dimensions



Flange Style



1/4" NPT internal (female) thread

PRESSURE SWITCH



REPSGLOBALGROUP

Email: Info@repsGGcom

<https://repsGGcom>

